

mGluR2 Antibody
Rabbit mAb
Catalog # AP90996**Specification**

mGluR2 Antibody - Product Information

Application	WB, IHC, ICC
Primary Accession	Q14416
Reactivity	Rat
Clonality	Monoclonal
Other Names	
GRM2; Glutamate receptor homolog; GPRC1B; mGlu2; Metabotropic; GLUR2; MGLUR2;	
Isotype	Rabbit IgG
Host	Rabbit
Calculated MW	95568 Da

mGluR2 Antibody - Additional Information

Dilution	WB~~1:1000 IHC~~1:100~500 ICC~~N/A
Purification	Affinity-chromatography
Immunogen	A synthesized peptide derived from human mGluR2
Description	G-protein coupled receptor for glutamate. Ligand binding causes a conformation change that triggers signaling via guanine nucleotide-binding proteins (G proteins) and modulates the activity of down-stream effectors, such as adenylate cyclase. Signaling inhibits adenylate cyclase activity. May mediate suppression of neurotransmission or may be involved in synaptogenesis or synaptic stabilization. Rabbit IgG in phosphate buffered saline , pH 7.4, 150mM NaCl, 0.02% sodium azide and 50% glycerol. Store at +4°C short term. Store at -20°C long term. Avoid freeze / thaw cycle.
Storage Condition and Buffer	

mGluR2 Antibody - Protein Information**Name** GRM2 ([HGNC:4594](#))**Synonyms** GPRC1B, MGLUR2**Function**

Dimeric G protein-coupled receptor which is activated by the excitatory neurotransmitter

L-glutamate (PubMed:37286794). Plays critical roles in modulating synaptic transmission and neuronal excitability. Upon activation by glutamate, inhibits presynaptic calcium channels, reducing further glutamate release and dampening excitatory signaling (By similarity). Mechanistically, ligand binding causes a conformation change that triggers signaling via guanine nucleotide-binding proteins (G proteins) and modulates the activity of down-stream effectors, such as adenylate cyclase. May mediate suppression of neurotransmission or may be involved in synaptogenesis or synaptic stabilization.

Cellular Location

Cell membrane; Multi-pass membrane protein. Synapse. Cell projection, dendrite

Tissue Location

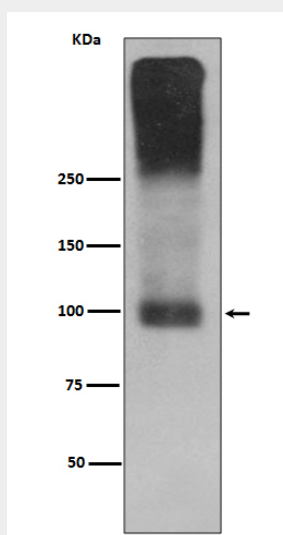
Detected in brain cortex (at protein level). Widely expressed in different regions of the adult brain as well as in fetal brain.

mGluR2 Antibody - Protocols

Provided below are standard protocols that you may find useful for product applications.

- [Western Blot](#)
- [Blocking Peptides](#)
- [Dot Blot](#)
- [Immunohistochemistry](#)
- [Immunofluorescence](#)
- [Immunoprecipitation](#)
- [Flow Cytometry](#)
- [Cell Culture](#)

mGluR2 Antibody - Images



Western blot analysis of mGluR2 expression in Mouse brain lysate.